

Studer Vista Remote Bay

The unparalleled Vistonics® operating concept goes beyond the Vista console.

The well received and awarded Studer Vista 7 as well as the Studer Vista 6 and Studer Vista 8 are completed by the new Studer Vista Remote Bay. The Remote Bay provides exactly the functionality

of the Channel Bay of the Vista 6/7/8 main console but can be placed remotely from the main consoles thus enhancing the flexibility of the console in many applications.



Studer Vista Remote Bay: shown as version for a Vista 6 console.

The Studer Vista Remote Bay looks and performs exactly like a Channel Bay on the Vista main console. It includes the well accepted and unique Vistonics® user interface which provides instant overview as well as immediate access to critical controls. The Remote Bay can e.g. be placed next to the Vista 6/7/8 behaving simply as additional channels to the main console. This becomes very useful for installations in places with limited space such as an OB vehicle. Placed remotely from the main console the Remote Bay can control all available channels of the main console from a distance. The Remote Bay therefore can be

used on-stage or in-audience (FOH) remote to the main console e.g. in on-location live transmissions.

Operation of the Studer Vista Remote Bay is exactly the same as with the channels on the main console and even the navigation through the DSP channels remains the same. In normal mode the Remote Bay behaves as an additional Channel Bay to the main console. Its logical location is to the right of the main desk and can therefore also be used as extension to the main console.

In Locked mode the Remote Bay acts as an independent controller with its own choice of channels to be controlled. The operators on the main desk as well as on the Remote Bay can independently chose the

channels to work with. Since the Remote Bay acts as an additional Channel Bay to the main console some of the global functions such as Copy/Paste, Ganging, Global View effect both at the same time.

Technical Information

The fiber optic interconnection system allows a maximum distance of 400 meters between the Remote Bay and the main console. The Remote Bay can therefore be placed inside a big venue or stadium while the OB vehicle stays outside the building. Only one fiber optics cable and a mains supply is needed thus making installation a quick and easy task.

The Remote Bay is available in two sizes incorporating either one or two Channel Bays. Each Channel Bay includes 10 channel faders, one Vistonics® unit, all other channel controls and 10 channel bargraph meters — exactly like on the main console. The Vista consoles can be operated with either one or two 10 fader Remote Bays or with

one 20 fader Remote Bay. The Vista consoles allow a maximum of 70 faders (7 Channel Bays) including the Remote Bay(s).

The mains inlet and the fibre optical connections are optionally also available in a rugged version.

Note: The Vista Remote Bay doesn't allow true and independent two operator mode. The Vista Remote Bay doesn't include communication means and it's not foreseen to add talkback and monitoring functionality.



Studer Vista 6 live broadcasting mixer



Studer Vista 8 live production and broadcasting mixer

The Studer Vista Remote Bay is a flexible completion to the Vista family consisting of the Vista 7 digital production mixer, the Vista 6 digital live broadcasting mixer and the Vista 8 live production and broadcasting mixer.



Studer Vista 7 digital production mixer

STUDER
professional audio equipment

H A Harman International Company

Studer Professional Audio GmbH Althardstrasse 30, CH-8105 Regensdorf-Zurich Switzerland, Phone +41 44 870 75 11, Fax +41 44 870 71 34

www.studer.ch

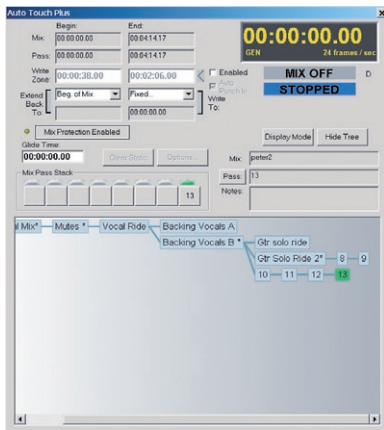
All content subject to change. Studer is a registered trademark of Studer Professional Audio GmbH. Printed in Switzerland. Copyright by Studer Professional Audio GmbH

Studer Vista 7 Machine Control

Comfort and speed of operation on the Studer Vista 7 is far beyond existing designs due to its unique Vistonics® user interface. The powerful AutoTouch Plus dynamic automation complements the ergonomic operating concept of the console thus making all kinds of productions quick and easy. Tailor made machine control becomes very important in such an efficient environment.



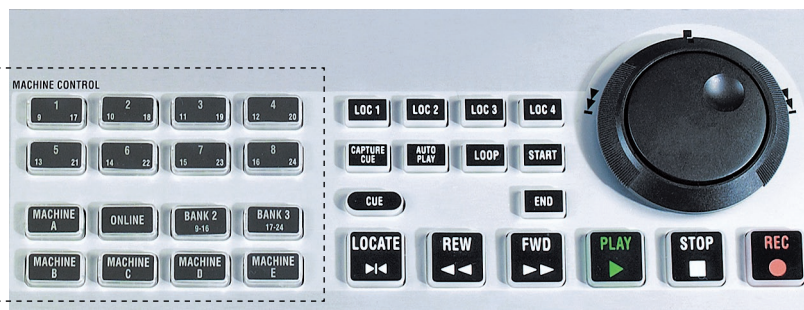
Automation Panel on the Studer Vista 7 ...



... and surface control screen of the AutoTouch Plus for instant overview and immediate access in critical production situations.

Dedicated Control Buttons

Colin Broad, Qolle and Soundmaster use the 16 buttons on the left of the machine control section for dedicated functions. This includes machine enable/disable, record ready and other system specific commands (*programmable — depending on the system used*).



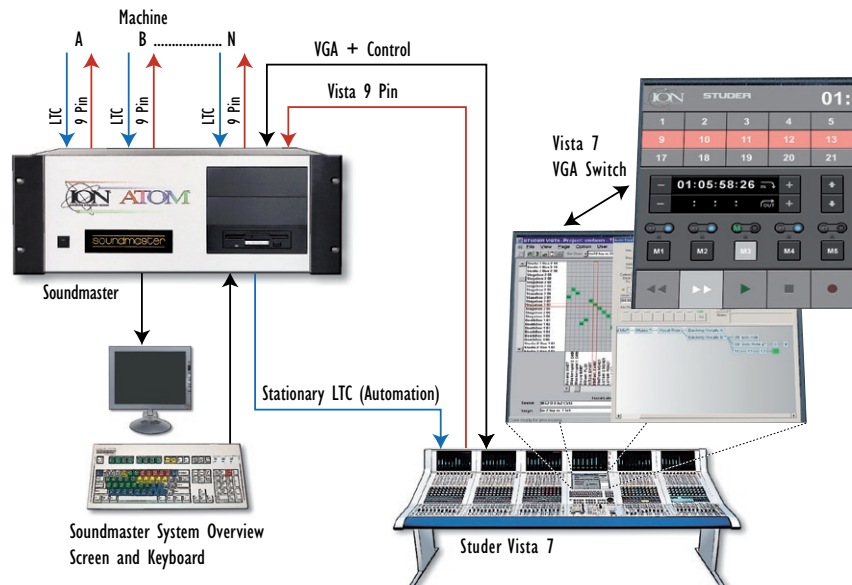
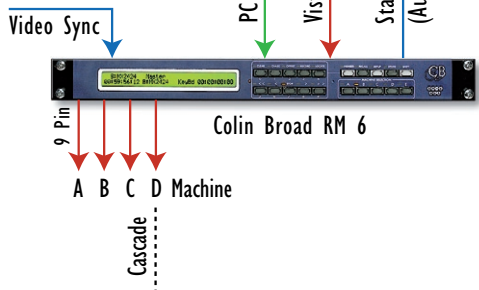
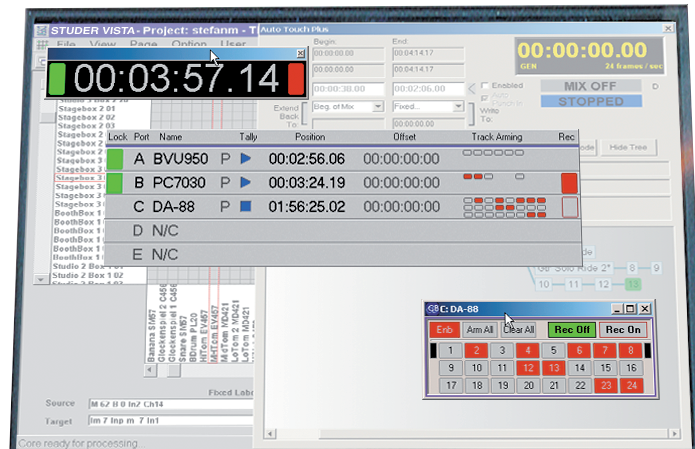
Machine Control with dedicated buttons and controls is standard on the Studer Vista 7 and can control one machine with 9 pin interface. Three different synchronizers and multi-machine control systems of third party manufacturers can seamlessly be integrated within the Studer Vista 7. They can be directly controlled via the dedicated controls including a jog/shuttle wheel as well as through the TFT screen in the Control Bay.

All three machine controllers from Colin Broad, Qolle and Soundmaster include the same basic functionality. They can be distinguished by their specific feature set and system design making each of them perfectly suited for defined applications. All three systems can be adapted to a given environment for perfect integration and control. The following pages are a brief introduction to the three synchronizers and machine control systems in conjunction with the Studer Vista 7 digital mixing console.

Colin Broad RM-6 Synchronizer

The Colin Broad RM-6 is the latest of a number of well known remote control system and synchronizer products. The functionality of the 19/1 U rack unit is completed by the

dedicated control software running on the Studer Vista 7. All main functions such as machine commands, record ready, machine enable/disable, time offset and more can be directly controlled using the dedicated machine control buttons and the software on the Vista screen.

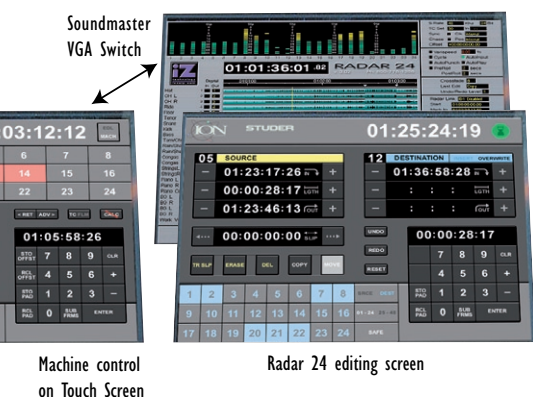
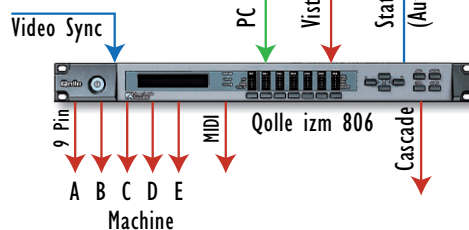
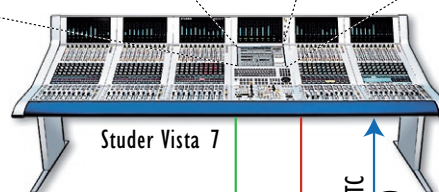




Qolle izm 806 System Controller

The Qolle izm 806 is an advanced control system designed for today's audio post-production. It consists of a compact (19", 1 U high) machine control unit and a dedicated control

software running on the Studer Vista 7. All main functions such as machine commands, record ready, machine enable/disable, time offset and more can be directly controlled using the dedicated machine control buttons and the software on the Vista screen.



Soundmaster ION Operating Environment

Soundmaster ION is much more than a sophisticated machine control system. It seamlessly integrates the diverse technologies used in sound post production via a single, powerful user interface and won an Academy Award in recognition. The main functions are accessed

using the dedicated controls on the Studer Vista 7. Numerous other functions are displayed on the screen of the Vista 7 and are controlled using a touch screen. The functions displayed and controlled are freely programmable.

This touch screen is an official Studer Vista 7 option for the integration of Soundmaster. In conjunction with the Soundmaster touch

screen option it is possible to integrate non-linear devices such as Radar 24, an award winning hard disk based recorder by iZ Technology, seamlessly into the Vista 7 console. Often used editing functions during the mixing process, such as track slipping, are especially easy to access.



Studer Vista 7 Machine Control

The brief information about the synchronizers and machine control systems in this leaflet is just an overview. Please contact the manufacturers directly for the most up-to-date information and an offer for your installation.



CB Electronics
Loddonside, Lands End House
Beggars Hill Road
Charvil
Berks RG10 0UD, United Kingdom
+44 118 9320345
support@colinbroad.com
<http://www.colinbroad.com>



Tamura Corporation / Qolle
Broadcom Business Unit
Sales Department
1-19-43, Higashi-Oizumi
Nerima-ku
Tokyo 178-8511, Japan
+81 3 3978 2242
info@qolle.com
<http://www.qolle.com>



Soundmaster Group
89 Barford Road
Toronto
Ontario M9W 4H8
Canada
+1 416 741 7057
vista@soundmaster.com
<http://www.soundmaster.com>



iZ Technology Corporation
#214 - 8988 Fraserton Court
Burnaby, BC V5J 5H8
Canada
+1 800 776-1356
sales@izcorp.com
<http://www.izcorp.com>

STUDER
professional audio equipment
H A Harman International Company










Studer Professional Audio GmbH Althardstrasse 30, CH-8105 Regensdorf-Zurich Switzerland, Phone +41 44 870 75 11, Fax +41 44 870 71 34






www.studer.ch

All content subject to change. Studer is a registered trademark of Studer Professional Audio GmbH. Printed in Switzerland. Copyright by Studer Professional Audio GmbH



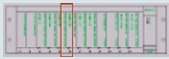

Available Options for Vista 6 and Vista 7

Option	Picture	Description	How to order
Prewired Channel Bay		A "blank" Channel Bay in the space where in the future a normal Channel Bay can be installed. All the necessary wiring is fitted, and the power supply capacity is specified for the additional Channel Bay.	Prewired Channel Bays must be part of the initial order of the system. Mechanical frames cannot be added to a Mixing Console later.
TFT Bay (15" VGA Screen)		A 15" VGA screen built into a blank Channel Bay panel. Any external workstation may be connected and thus be integrated into the surface of the mixing console. (Resolution: 1024 x 768)	Prewired Faderbays have to be part of the initial order of the system. Mechanical frames can not be added to Mixing Console later.
Remote Bay		The Remote Bay provides exactly the same functionality as the Channel Bay of the Vista 6/7 main console but can be placed remotely from the main console thus enhancing the flexibility of the console in many applications.	Must be part of the initial order of the system. Only available with consoles having 30 or more faders.
Script Tray large		An elegantly designed script tray with 4 wheels. It is the width of a Channel Bay and provides an additional space to put the engineer's paperwork or even a remote control device.	Can be ordered at any time. Part No. 1.949.060.00
Script Tray small		Same as above, but for the lower (fader) section of the control surface.	Can be ordered at any time. Part No. 1.949.063.00
Dual Joysticks		Two motorized joysticks to make surround panning totally intuitive. Each joystick may be assigned to a single channel or to temporary gangs of several channels.	Can also be added to the desk after the initial order.
Nearfield Speaker mounting kit		A small platform (300 x 200 mm) for e.g. a nearfield speaker or a table top meter. Can only be mounted at the junction of two mechanical bays. It is not possible to mount this kit at the very left or very right of the desk.	Can be ordered at any time. Part No. 1.949.061.00





System Options for Vista 6 and Vista 7

Option	Picture	Description	How to order
Mastersync Unit		The Vista system normally works with the core internal sync signal. If there is a requirement for a standalone sync unit, the D19 Mastersync Unit can be ordered.	Can be ordered at any time. Part No. 60.681.01000
Config Editor SW		Configuration Editor Software enables the standard mixing console configurations to be adapted to suit individual customer requirements.	Can be ordered at any time. Part No. 1.950.395.24
19" Rack		Selecting this option ensures the supply of a rack with enough space for all the rack equipment of the Vista system including any additional options ordered.	Must be part of the initial order of the system.
Redundant Power Supplies		<ul style="list-style-type: none"> * for the desk surface * for the dsp core * for the monitoring frame * for the D21m I/O system 	For the desk and the monitoring frame, the redundant PS must be part of the initial order. For the dsp core and the D21m, the redundant PS can also be added later.
UPS (uninterruptible power supply)		For control PC and Desk only!	Must be part of the initial order of the system.

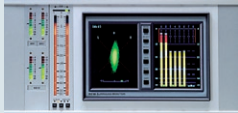
Monitoring Options for Vista 6 and Vista 7

Option	Picture	Description	How to order
GPI / GPO cards		GPI opto input card with 24 inputs. GPO relay output card with 16 outputs.	The monitoring frame is prewired for all optional cards. Optional cards can be fitted at any time.
CR Monitor option for 7.1 or Dolby EX		Additional Monitor Group Selector card for two additional channels of CR monitoring.	See above
Studio monitor option		Additional Monitor Group Selector card for two additional channels of Studio monitoring.	See above
Additional D/A converter card		Additional D/A converter card with 10 channels of 24 Bit/96 kHz capable converters. Only applicable for consoles with no more than 10 monitoring channels in use. Larger systems have the 2nd D/A converter card fitted as standard.	See above

Options for Vista 7 only (Machine Control)

Option	Picture	Description	How to order
CB Electronics RM6		For up to 4 machines. Units may be cascaded for more machines. For details see "Vista 7 machine control" leaflet.	The RM6 can be ordered with the Vista system directly from Studer. It is also possible to add an RM6 to an existing Vista System.
Qolle izm 806		For up to 4 machines. Units may be cascaded for more machines. For details see "Vista 7 machine control" leaflet.	Order directly from Tamura/Qolle
Soundmaster ION		Sophisticated user interface, -provides more than just machine control! For details see "Vista 7 machine control" leaflet.	Order directly from Soundmaster
Touchscreen for Soundmaster		This option equips the Vista 7 Control Bay with a touchscreen to operate the Soundmaster ION directly from the Control Bay TFT screen. The F8-key on the Control Bay switches between the Vista Graphic Controller and the Soundmaster screen.	Must be part of the initial order of the system, cannot be added later.

Option for Vista 6 only

Option	Picture	Description	How to order
Custom Meter Bridge		May be ordered as an alternative to the standard meters (8 assignable meters with gain reduction display). 8 units of space for a selection of 190 mm meter modules. One meter must be assigned to the CR monitor output. The other 7 may be specified as required, connected directly from AES/EBU interfaces in the core.	A choice of analog and digital surround or stereo meters can be ordered with this option. Ask your distributor for a list.

STUDER
professional audio equipment

H A Harman International Company

Studer Professional Audio AG, Althardstrasse 30, CH - 8105 Regensdorf/Zurich
phone +41 44 870 75 11, fax +41 44 870 71 34; marketing@studer.ch, http://www.studer.ch