

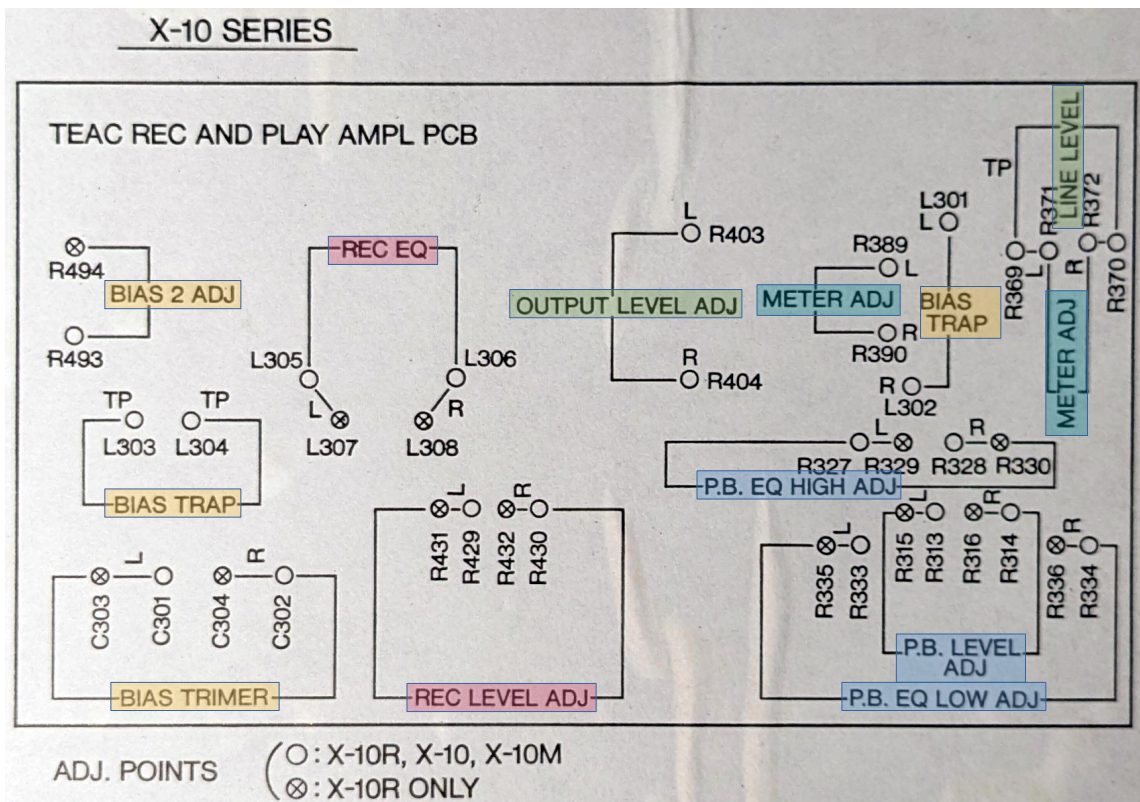
Quick Reference Guide to Teac X-10:

Page:

2 Location of adjustment pots

3 "





R313/R314	Playback level (FWD)	R429/R430	Record level (FWD)
R315/R316	Playback level (REV)	R431/R432	Record level (REV)
R327/R328	Playback EQ (HIGH FWD)	R493	Record Bias 2 (FWD)
R329/R330	Playback EQ (HIGH REV)	R494	Record Bias 2 (REV)
R333/R334	Playback EQ (LOW FWD)	L301/L302	Bias trap (output)
R335/R336	Playback EQ (LOW REV)	L303/L304	Bias trap (record)
R369/R370	dbx level	L305/L306	Record EQ (FWD)
R371/R372	VU meter (monitor)	L307/L308	Record EQ (REV)
R389/R390	VU meter (playback)	C301/C302	Record Bias 1 (FWD)
R403/R404	Output level	C303/C304	Record Bias 1 (REV)

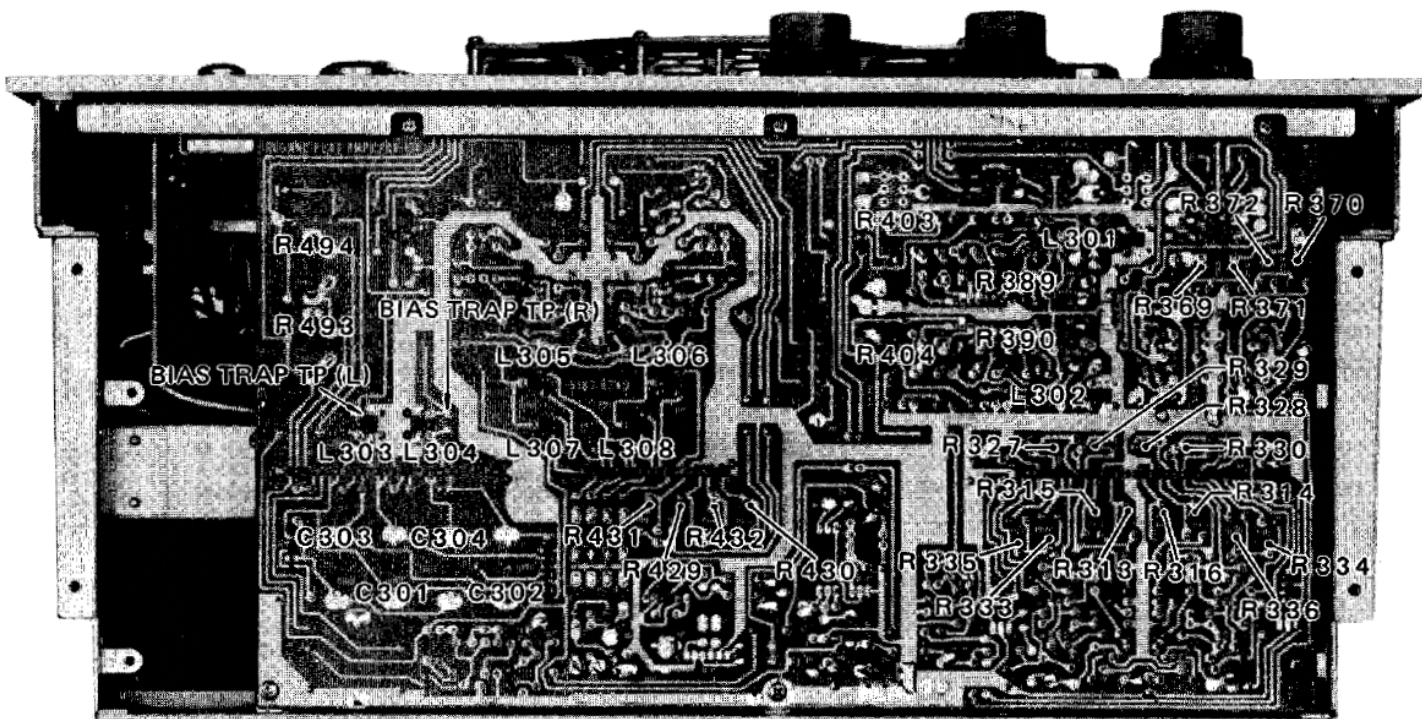
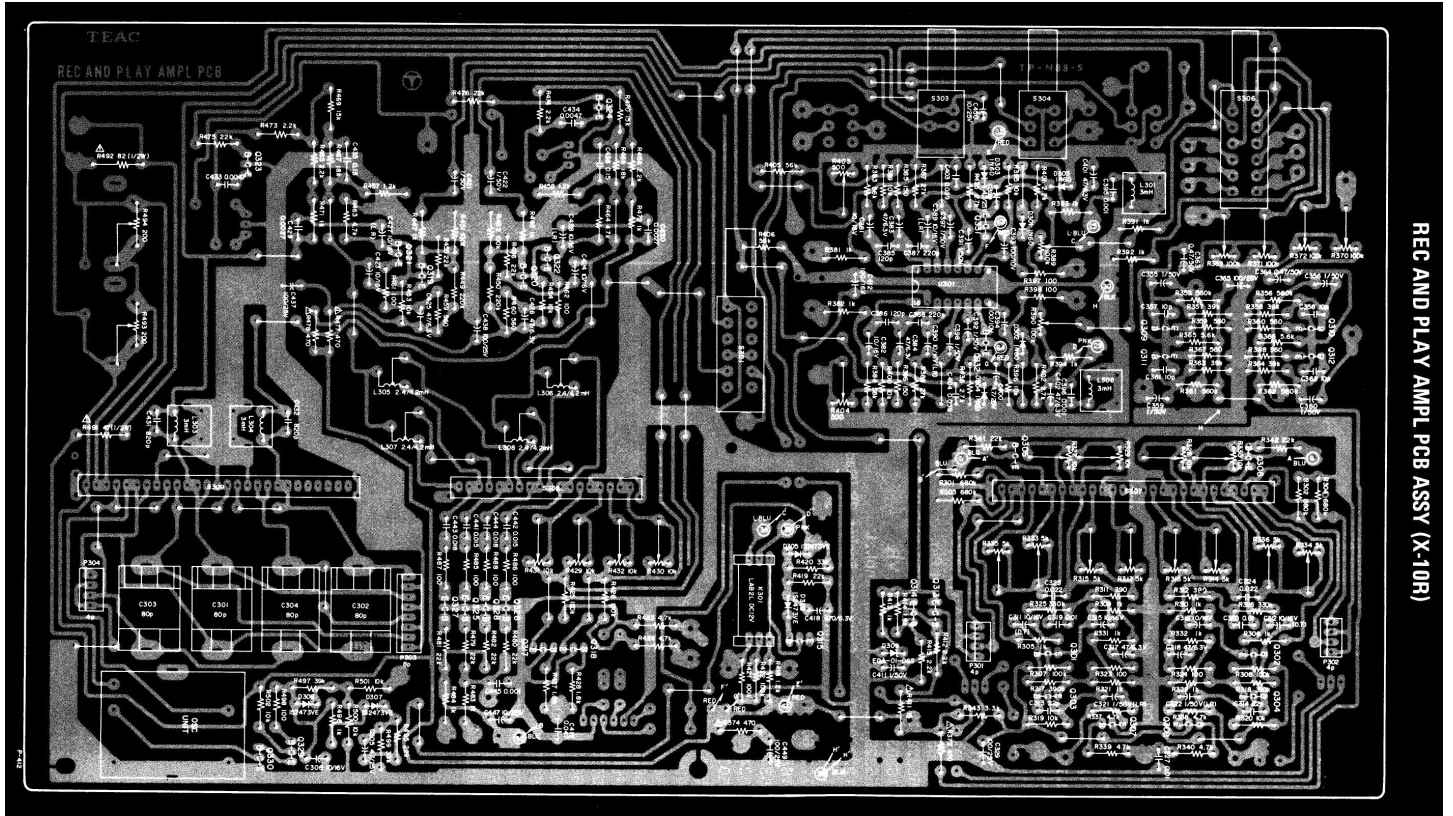


Fig. 3-5

Audio PCB seen from solder side:



Audio PCB seen from component side:
approx. function of areas

